

Telescopic linear slides

with one side extension, S-shaped

SPECIFICATION

Type

Type **E**: with one side extension

Rail / Runner

Heat treatable steel

- zinc plated, blue passivated
- Raceways hardened

Balls

Anti-friction bearing steel, hardened

Ball cage

Steel, zinc plated

Intermediate metal sheet of the ball cage

Steel, zinc plated



INFORMATION

Telescopic linear slides GN 2406 consist of two slides linked by an intermediate profile. They are used when the lateral space requires a small width, and when large extension is required. The S-shape of the intermediate profile gives the configuration a high degree of sturdiness.

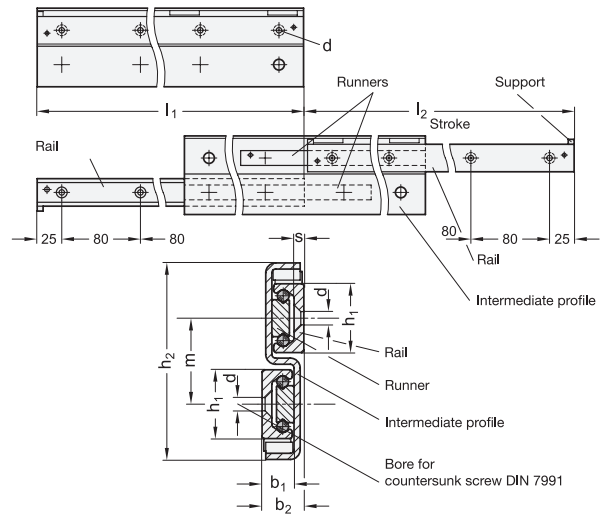
The rails and the intermediate profile are equal in length. Both rails can be extended so that an extension is reached which is longer than the base length l_1 .

External elements should limit the maximum sliding distance; the supports of the rail have been designed to guard against the inadvertent extraction of the runner from the rail.

- Load rating and information to linear guide rail systems (see page 649)

ON REQUEST

- other lengths (based on the standard lengths grid dimension of 80 mm)
- Special lengths (bore, start and end distances)
- Extensions on both side of each rail (Type D)



GN 2406

Description	h_1	$l_1 - l_2$	b_1	b_2	d	h_2	m	s	Δ
GN 2406-28-290-E	28	290 - 296	12.3	17	5.5	80	35	4	1890
GN 2406-28-370-E	28	370 - 380	12.3	17	5.5	80	35	4	2410
GN 2406-28-450-E	28	450 - 464	12.3	17	5.5	80	35	4	2930
GN 2406-28-530-E	28	530 - 548	12.3	17	5.5	80	35	4	3450
GN 2406-28-610-E	28	610 - 630	12.3	17	5.5	80	35	4	3970
GN 2406-35-450-E	35	450 - 494	16.5	22.5	6.5	97	43	3.5	4000
GN 2406-35-530-E	35	530 - 558	16.5	22.5	6.5	97	43	3.5	4520
GN 2406-35-690-E	35	690 - 734	16.5	22.5	6.5	97	43	3.5	5990
GN 2406-35-850-E	35	850 - 886	16.5	22.5	6.5	97	43	3.5	7450
GN 2406-43-530-E	43	530 - 556	21	28	8.5	117	52	4.5	7740
GN 2406-43-690-E	43	690 - 726	21	28	8.5	117	52	4.5	10070
GN 2406-43-850-E	43	850 - 866	21	28	8.5	117	52	4.5	12410
GN 2406-43-1010-E	43	1010 - 1036	21	28	8.5	117	52	4.5	14750
GN 2406-43-1490-E	43	1490 - 1516	21	28	8.5	117	52	4.5	21750